



**WOOD
INTERNATIONAL
AGENCY**

THERMAN™

Exclusively available from Wood International Agency Limited, the THERMAN™ range of door blanks has been developed to provide a particularly stable, 30 minute fire rated, thermally efficient and environmentally friendly solid timber door blank at a competitive cost.

Suitable for both internal and external use, manufactured from FLEGT licensed timber to meet the due diligence requirements of the EU Timber Regulation (EUTR) and UK Timber Regulations (UKTR) for added peace of mind.

LIGHTWEIGHT, ENGINEERED TIMBER DOOR BLANKS
WHERE SUSTAINABILITY IS KEY



Made for Manufacturers

The Therman™ door system has been developed with joinery manufacturers in mind. Simplicity is key for Therman™ having no perimeter framing in the core, enabling blanks to be cut down to the required size for lipping, without having to consider internal framing requirements.

Primary test evidence also supports; arressed door and frame edges, engineered and natural timber lippings and door frames, clear unwired fire glass and some of the most popular seals and ironmongery available on the market.

Support and Service

Wood International Agency have a dedicated team for all their door products and systems, ensuring all WIA door products:-

- are continually developed and improved
- hold appropriate evidence to the required standards
- can be supplied from stock held in the UK
- follow the WIA policy for environmental sustainability
- come with unrivalled technical support
- are competitively priced

THERMAL

Extremely thermally efficient and demonstrable through extensive direct product testing. Approved Document L compliant.

FIRE RESISTANCE

Tested both opening towards and away from the furnace. Exceeding 30 minutes when tested both to UK National (BS 476-22) and European (BS EN 1634-1) standards.

ULTRA LIGHT

At around 25kg per 915x2135x44 blank (300kg/m³), THERMAN™ improves tool longevity and reduces operative fatigue.

SUSTAINABILITY

FLEGT origin timber as standard, the only UK & EU government recognised timber certification for legal verification of timber and wood products



Wood International Agency Limited
Wood House, 16 King Edward Road
Brentwood, Essex, CM14 4HL



+44 (0) 1277 232991



doors@woodia.co.uk



www.woodia.co.uk

WIA-THN-FSD-0144 Rev A 07/22/2024 - NH

PRODUCT PERFORMANCE - RESISTANCE TO FIRE

FULL DOOR ASSEMBLY PRIMARY TEST EVIDENCE

All primary test evidence detailed herein for fire resistance has been conducted in UKAS accredited laboratories.

DOOR CONFIG	LEAF SIZE (mm)	INTUMESCENT SEAL ARRANGEMENT	TEST STANDARD	RESULT
ULSASD	2183x933x44	2 No. 10x4, centrally in reveal, 10mm apart Dixon International Group - Therm-A-Seal	BS EN 1634-1	30 min
ULSADD	2183x933/886x44	1 No. 15x4, centrally in reveal of frame 2 No. 10x4, centrally in main leaf meeting stile, 10mm, apart Sealed Tight Solutions - STS1504 & STS1004	BS 476-22	30 min
ULSADD	2183x933/886x44	1 No. 15x4, centrally in reveal of frame 2 No. 10x4, centrally in main leaf meeting stile, 10mm, apart Lorient Polyproducts - Type 617	BS 476-22	30 min

TESTED GLAZING SYSTEMS

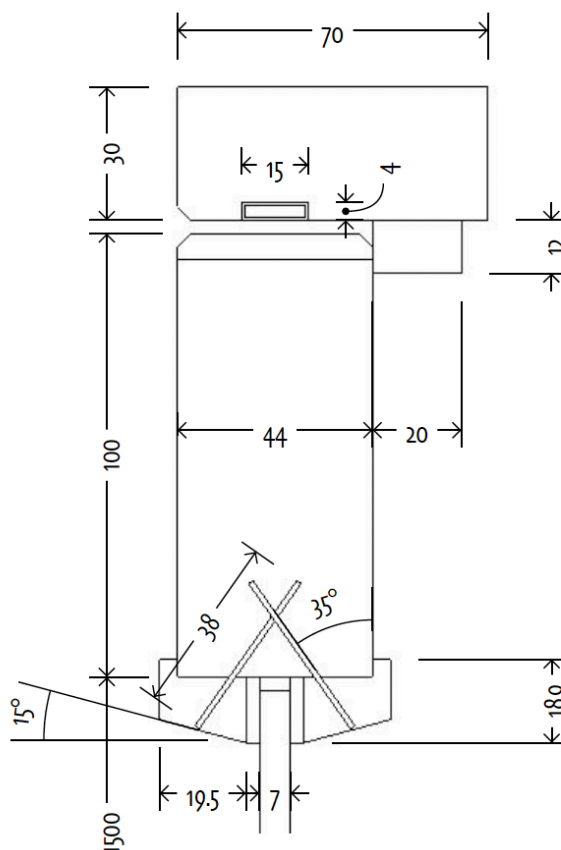
GLASS TYPE	APERTURE SIZE (mm)	GLAZING TAPE SYSTEM
Pyrobelite 7	1500mm high x 250mm wide	Sealmaster 15x4 Intumescent Foam Tape
Pyroguard Advance 2-EW30/7-1	1500mm high x 250mm wide	Sealmaster 15x4 Intumescent Foam Tape
Pyrobelite 7	1500mm high x 250mm wide	Sealed Tight Solutions ST105

Glazing beads manufactured from hardwood minimum density 630kg/m³ dimensioned as the drawing herein. Beads are held in with steel pins 16g x 38mm, pneumatically fired at approximately 35° from the face of the glass at 150mm centres, 50mm away from each corner. Glass is cut to allow for a 3mm gap within the aperture placed on 50mm x 3mm x 7mm non-combustible packers. Hardwood aperture linings are not required.

TESTED IRONMONGERY

Mortices for all ironmongery must be protected with 1mm intumescent protection (Raw Graphite - STS, MAP - Lorient Polyproducts, Therm-A-Strip - DIG or Therm-A-Flex - DIG).

TYPICAL SECTION DETAIL



HINGES	
MANUFACTURER	PRODUCT REF
HOPPE	AR8182
ZOO	ZHSH243RS

LOCKS/LATCHES	
MANUFACTURER	PRODUCT REF
HOPPE	AR 810
ZOO	ZDL7260RSS SL

FLUSH BOLTS	
MANUFACTURER	PRODUCT REF
HOPPE	AR 326
ZOO	ZAS03SS



PRODUCT PERFORMANCE - THERMAL RESISTANCE

PANEL PRIMARY TEST EVIDENCE

All primary test evidence detailed herein for thermal conductivity has been conducted in UKAS accredited laboratories.

THERMAN™ 44

SPECIMEN	SAMPLE DENSITY [kg/m ³]	THERMAL CONDUCTIVITY [W/mK]	THERMAL RESISTANCE [m ² K/W]	CENTRE PANEL U VALUE [W/m ² K]
THERMAN 44	≈300	0.0789	0.561	1.393

Full doorset calculations available on request. Material selection for frames and glazing will have an effect on the overall U Value. For assistance in design of assembly, please email doors@woodia.co.uk.